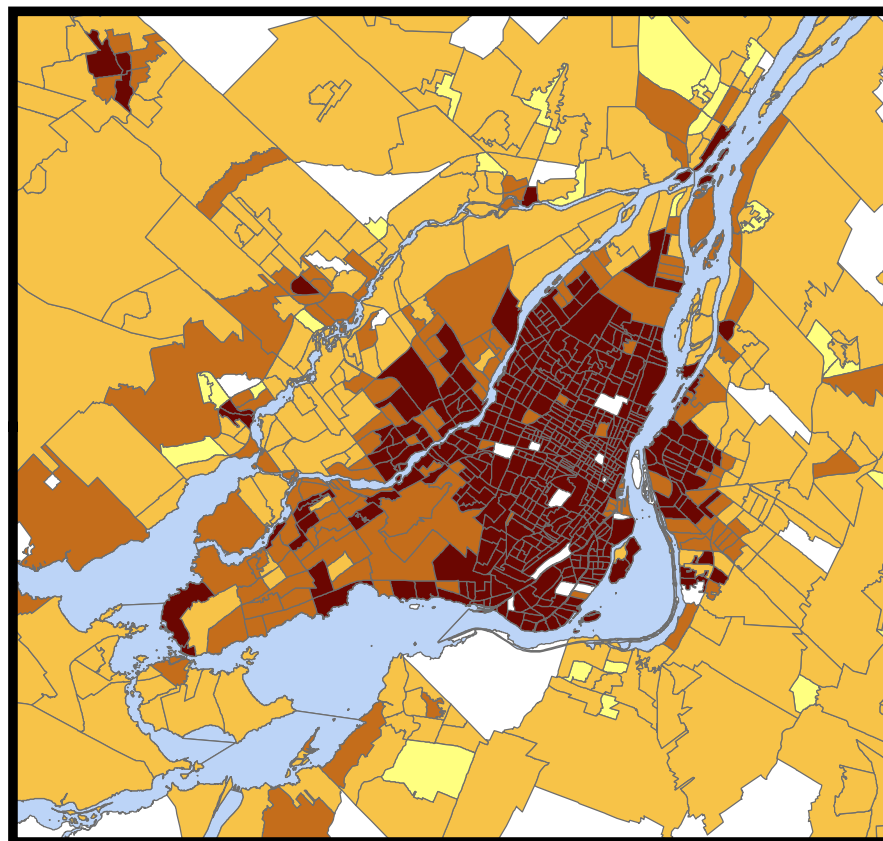
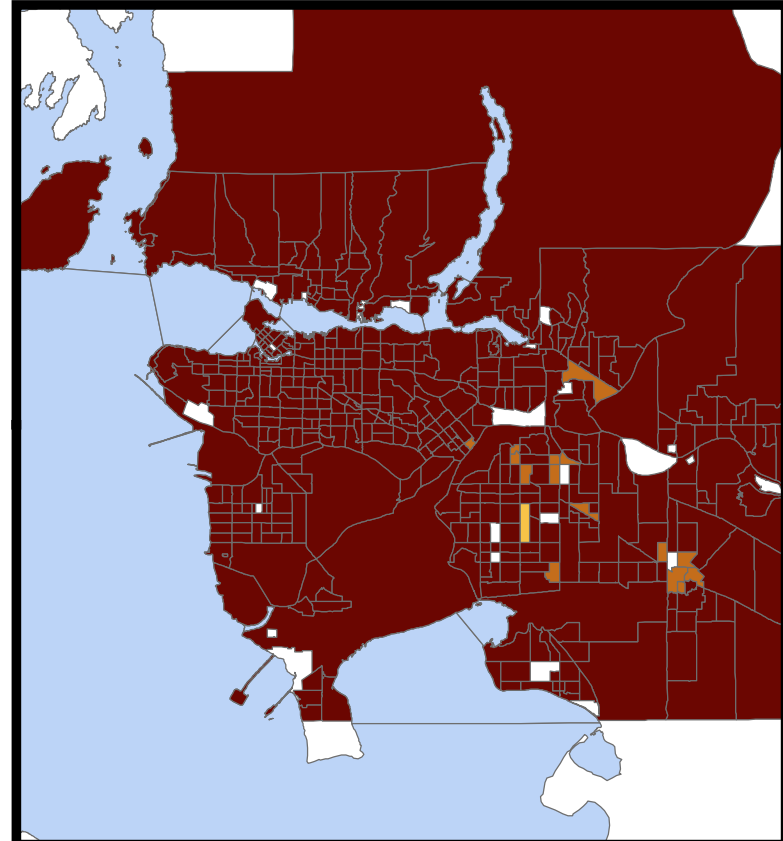


Montreal and Metro Vancouver Census Tract (CT) Housing Affordability

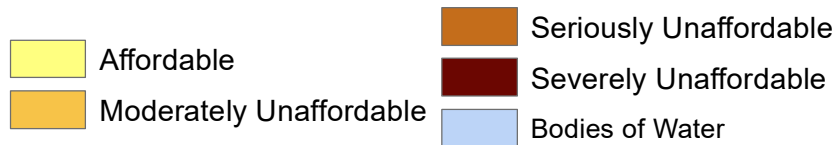


10 5 0 10 Kilometers

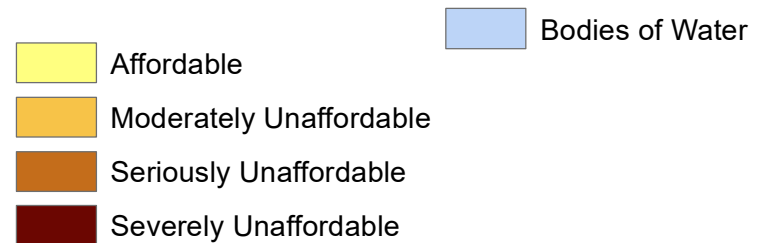


10 5 0 10 Kilometers

Montreal Housing Affordability



Vancouver Housing Affordability



Housing affordability is based on the ratio between census tract median household income versus the median dwelling value. So, the lighter colored areas are of lower ratios (e.g. between 0 and 3) and the darker colored areas are of higher ratios (e.g. between 5 and the maximum ratio between the two cities) and thus are less affordable. White spaces equal no data.

Coordinate Systems: NAD 1983 UTM Zones 10 & 18

Sources: Statistics Canada, University of Toronto CHASS Site